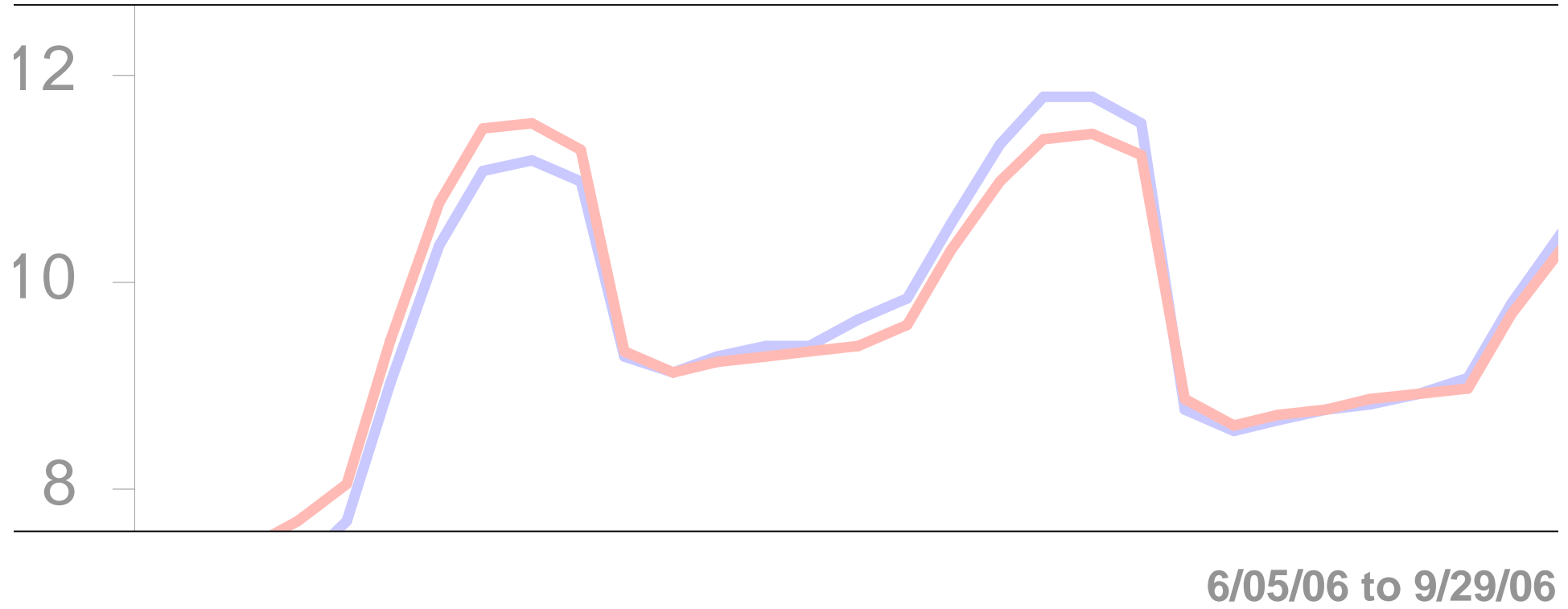


Commodity Forward Curves



6/05/06 to 9/29/06

Produced By:

DAILY DOSE OF OPTIMISM
<http://ddo.typepad.com>

Data From:

ManFinancial **M**

Index

Energy

- Natural Gas (NG)
- Crude Oil (CL)
- Unleaded Gasoline (HU)
- Coal (QL)

Agricultural

- Live Cattle (LC)
- Sugar #11 (SB)
- Corn (C)
- Wheat (W)
- Coffee (KC)
- Orange Juice – Florida Concentrate (FCOJ)

Metals

- Gold (GC)
- Silver (SI)
- Copper (HG)

Natural Gas (NG)

Contract Specifications

Exchange: NYMEX

Trading Unit: 10,000 MMBtu (million British thermal units)

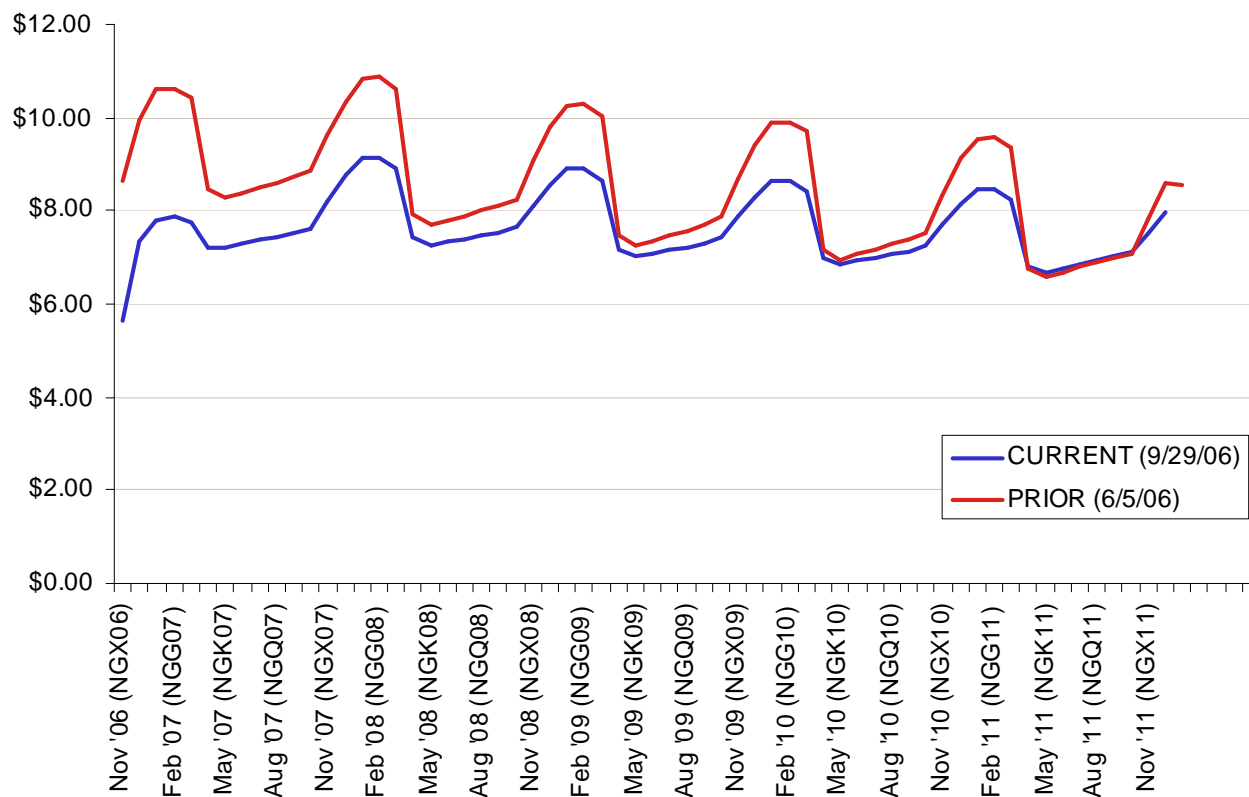
Trading Hours:

- 10.00a.m. - 2:30p.m. EST

NYMEX ACCESS hours: (Electronic order entry and trade matching):

- 3:15p.m. - 9:50a.m. Mon-Thurs
- 7:00p.m. - 9:50a.m. Sun

Dollars per mmbTU



Source: Man Financial

Crude Oil (CL)

Contract Specifications

Exchange: NYMEX

Trading Unit: 1,000 U.S. barrels (42,000 gallons)

Trading Hours:

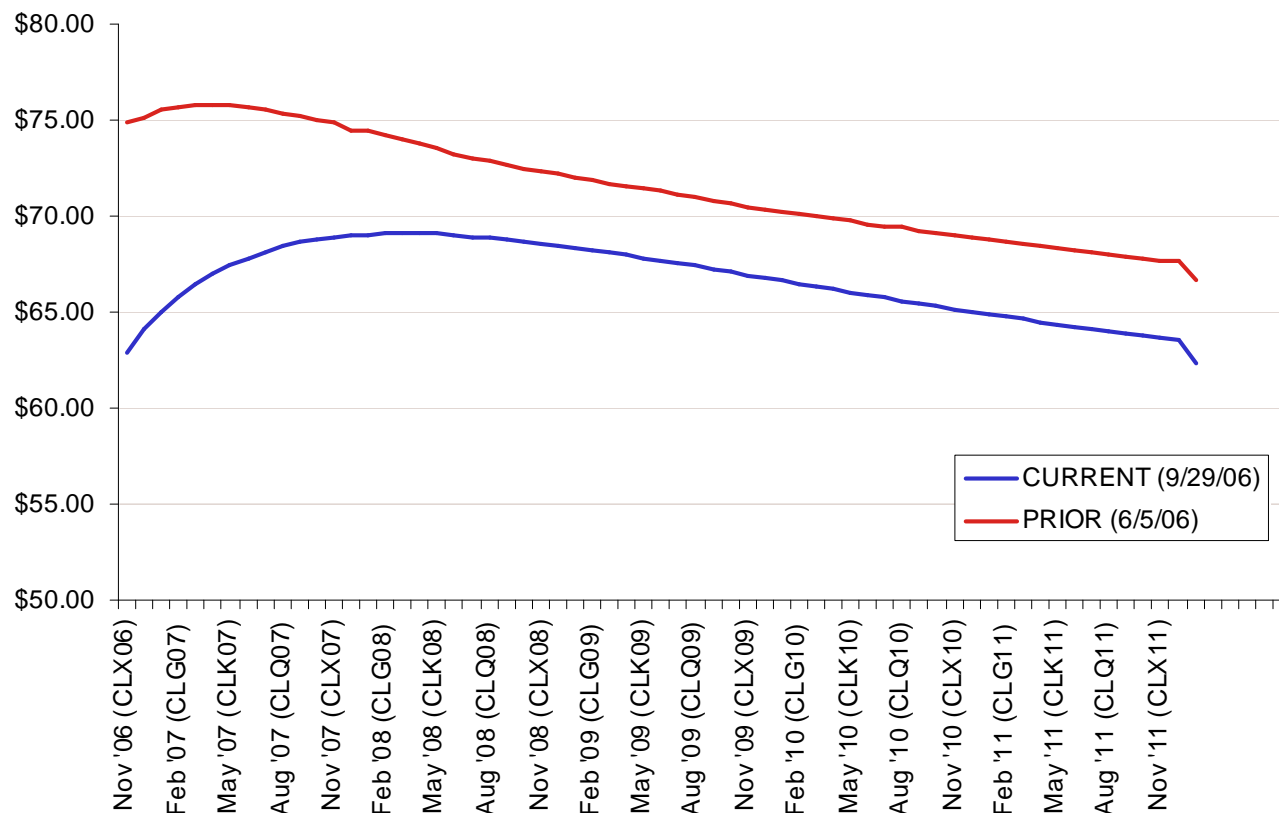
- 10:00a.m. - 2:30p.m. EST

NYMEX ACCESS hours: (Electronic order entry and trade matching):

- 3:15p.m. - 9:50a.m. Mon-Thurs

- 7:00p.m. - 9:50a.m. Sun

Dollars per Barrel



Source: Man Financial

Unleaded Gasoline (HU)

Contract Specifications

Exchange: NYMEX

Trading Unit: 42,000 gallons

Trading Hours:

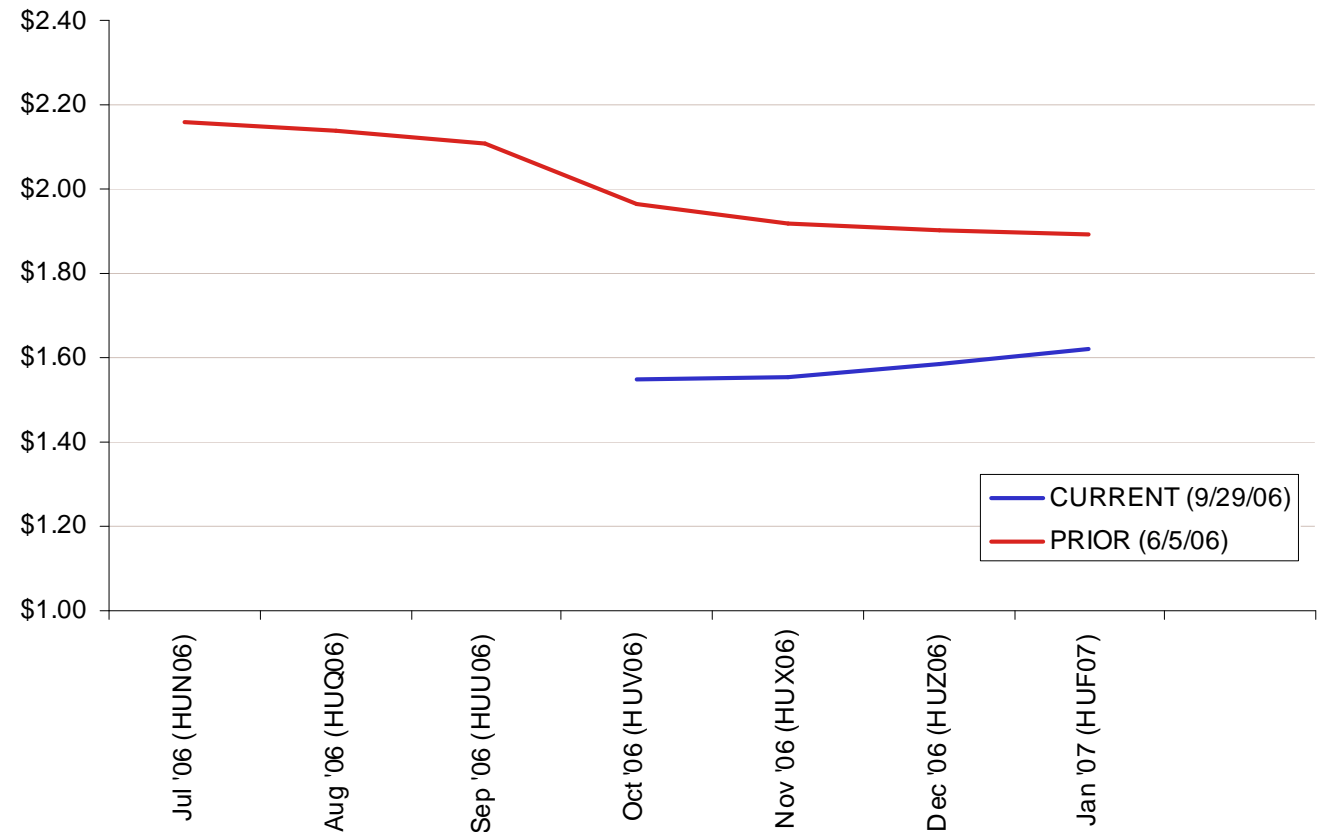
- 10.05a.m. - 2:30p.m. EST

NYMEX ACCESS hours: *(Electronic order entry and trade matching):*

- 3:15p.m. - 9:50a.m. Mon-Thurs

- 7:00p.m. - 9:50a.m. Sun

Dollars per Gallon



Source: Man Financial

Coal – Central Appalachian (QL)

Contract Specifications

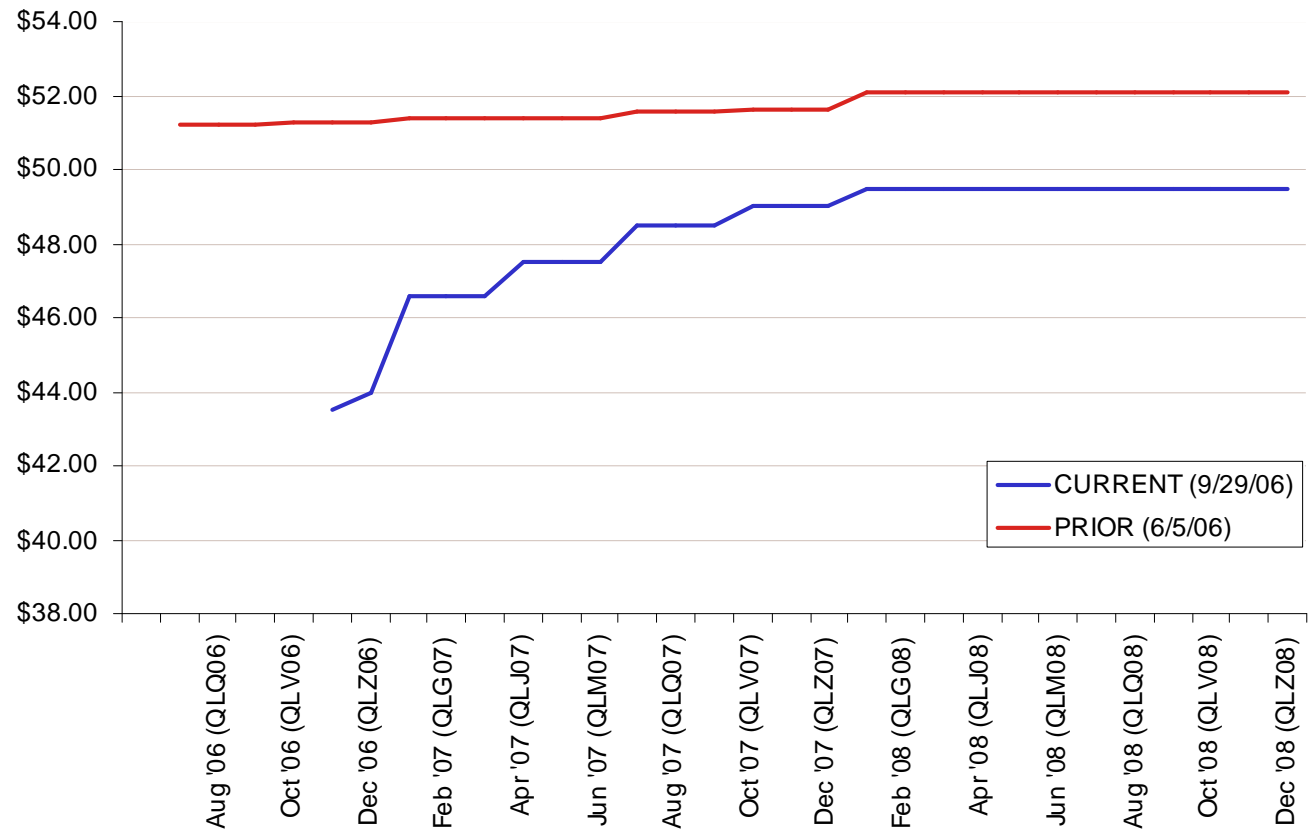
Exchange: NYMEX

Trading Unit: 1,550 tons of coal

Trading Hours:

- 3:15p.m. - 2:30p.m. Mon-Thurs
- 7:00p.m. - 2:30a.m. Sun EST

Dollars per Ton



Source: Man Financial

Live Cattle (LC)

Contract Specifications

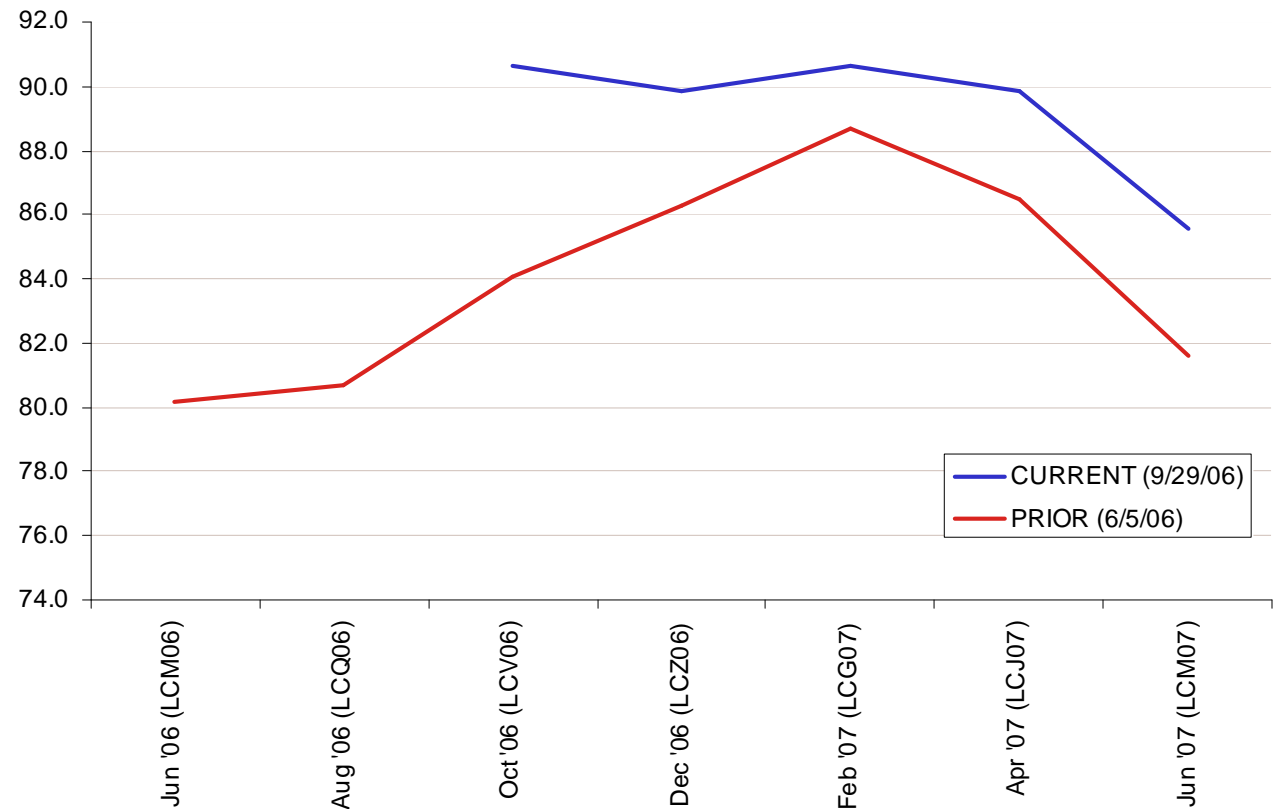
Exchange: CME

Trading Unit: 40,000 lbs of cattle

Trading Hours:

- 9:05a.m. - 1:00p.m. CST

Cents per Ton



Source: Man Financial

Sugar #11 (SB)

Contract Specifications

Exchange:

- NYBOT

Trading Unit:

- 112,000 lbs (50 long tonnes)

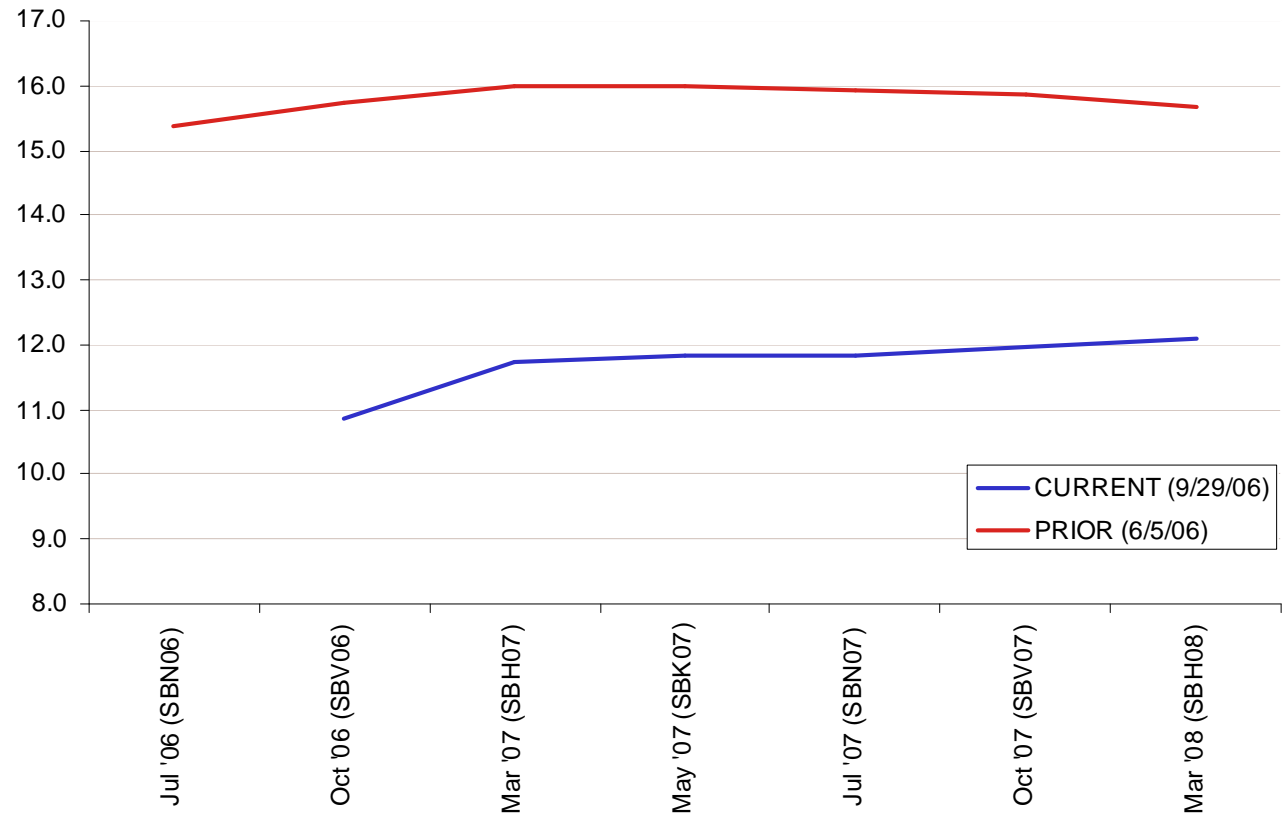
Price Quotation:

- Cents per pound

Trading Hours:

- 9:00a.m. to 12:00p.m. EST

Cents per pound



Source: Man Financial

Corn (C)

Contract Specifications

Exchange:

- CBOT

Trading Unit:

- 5,000 bushels

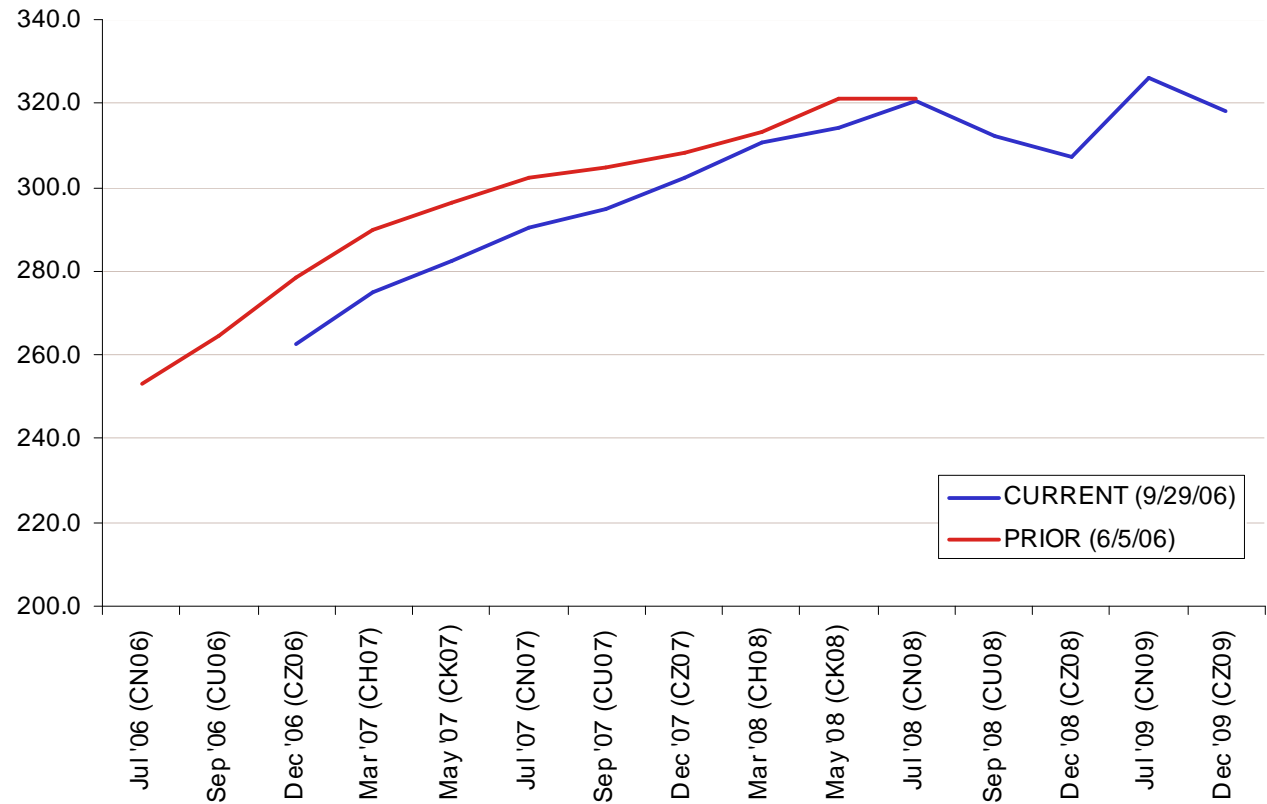
Price Quotation:

- Cents per bushel

Trading Hours:

- 9:30a.m. - 1:15p.m. CST

Cents per bushel



Source: Man Financial

Wheat (W)

Contract Specifications

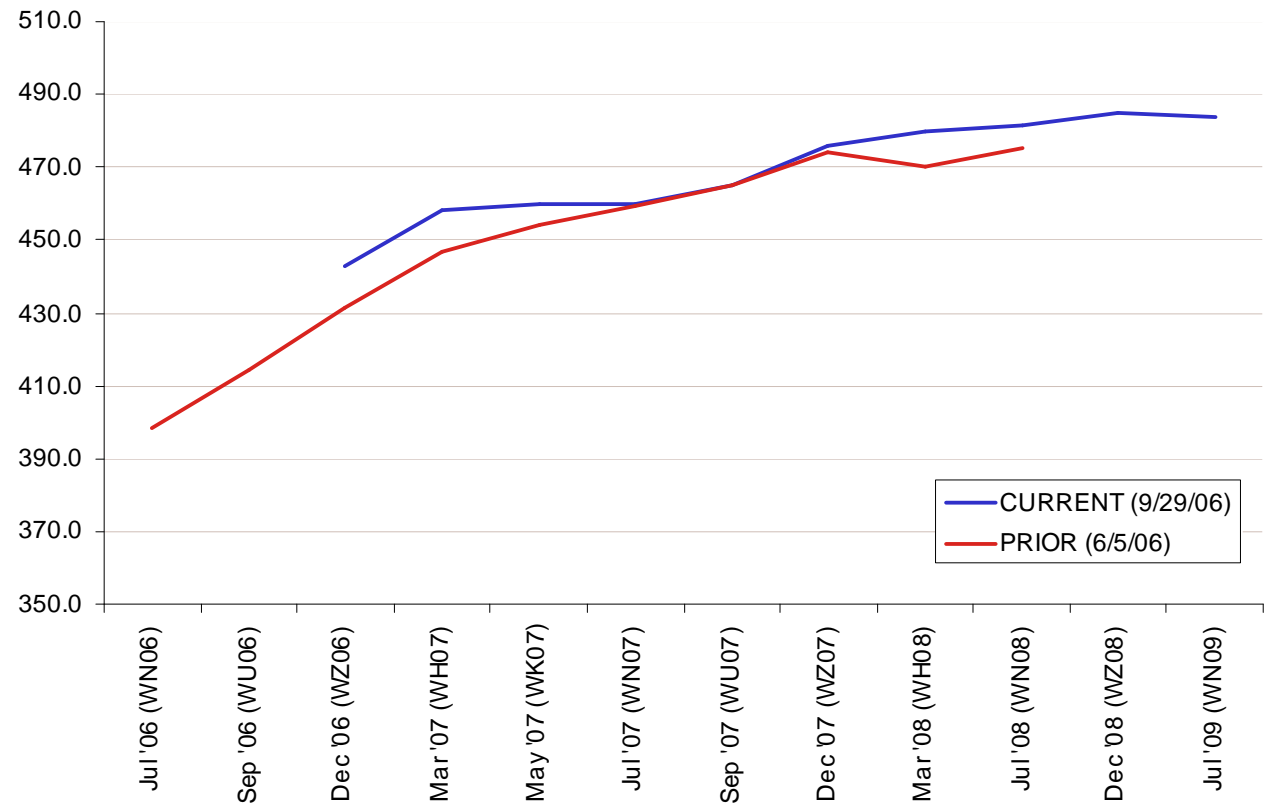
Exchange: CBOT

Trading Unit: 5,000 bushels

Trading Hours:

- 9:30a.m. - 1:15p.m. CST

Cents per bushel



Source: Man Financial

Coffee (KC)

Contract Specifications

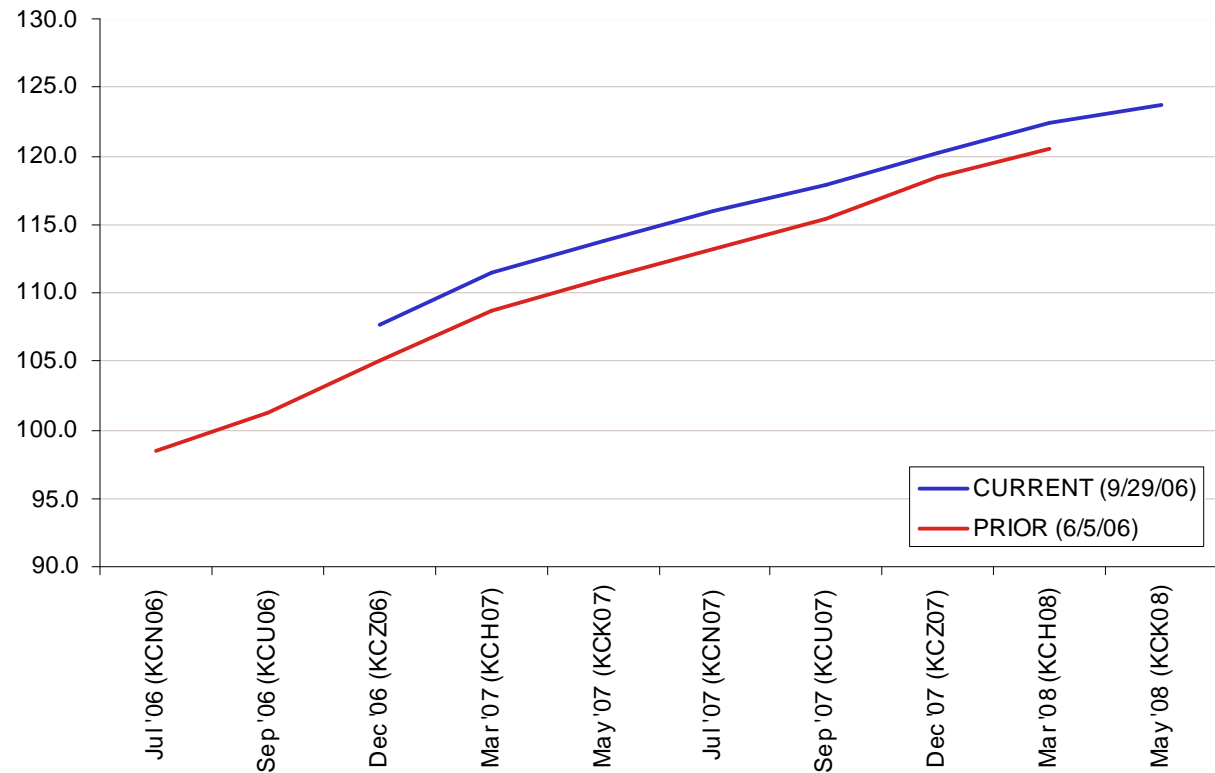
Exchange: NYBOT

Trading Unit: 37,500 lbs (250 bags)

Trading Hours:

- 9:15a.m. to 12:30p.m. EST

Cents per Pound



Source: Man Financial

Orange Juice – Florida Concentrate (FCOJ)

Contract Specifications

Exchange:

- NYBOT

Trading Unit:

- 15,000 lbs of orange juice solids

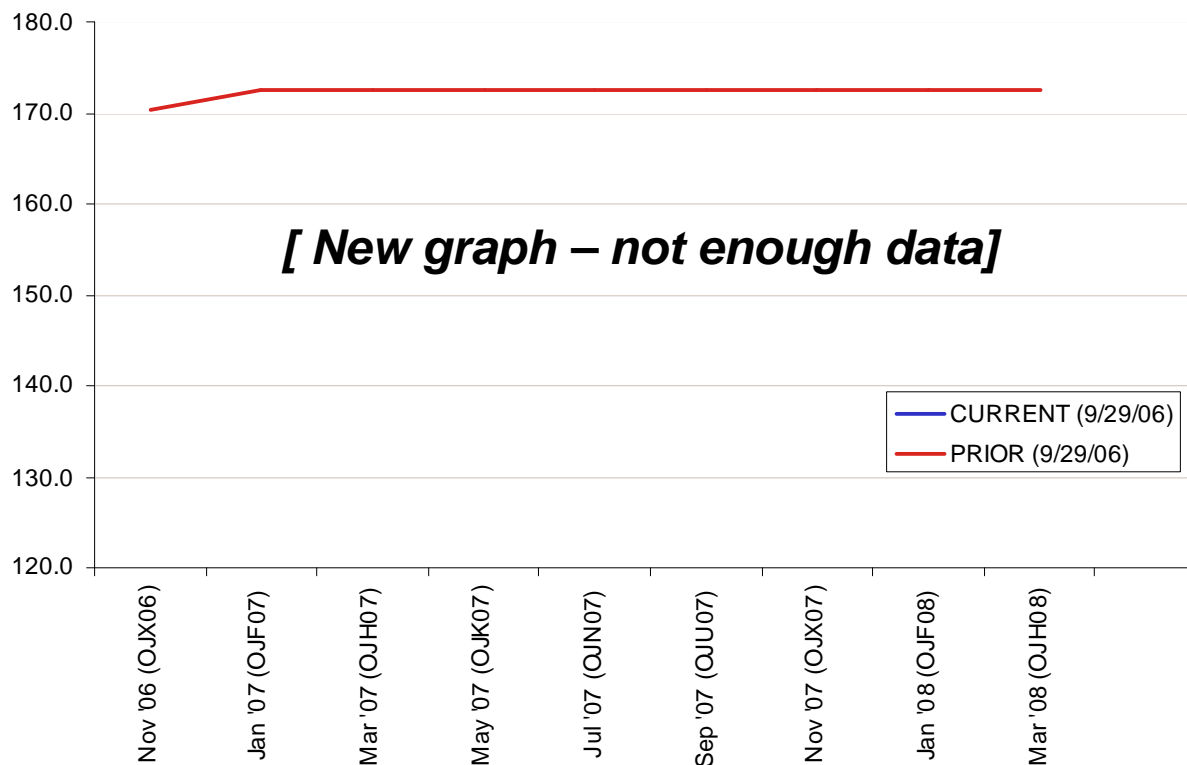
Price Quotation:

- Cents per pound

Trading Hours:

- 10:00am to 1:30pm EST

Cents per pound



Source: Man Financial

Gold (GC)

Dollars per Troy Ounce (1.097oz)

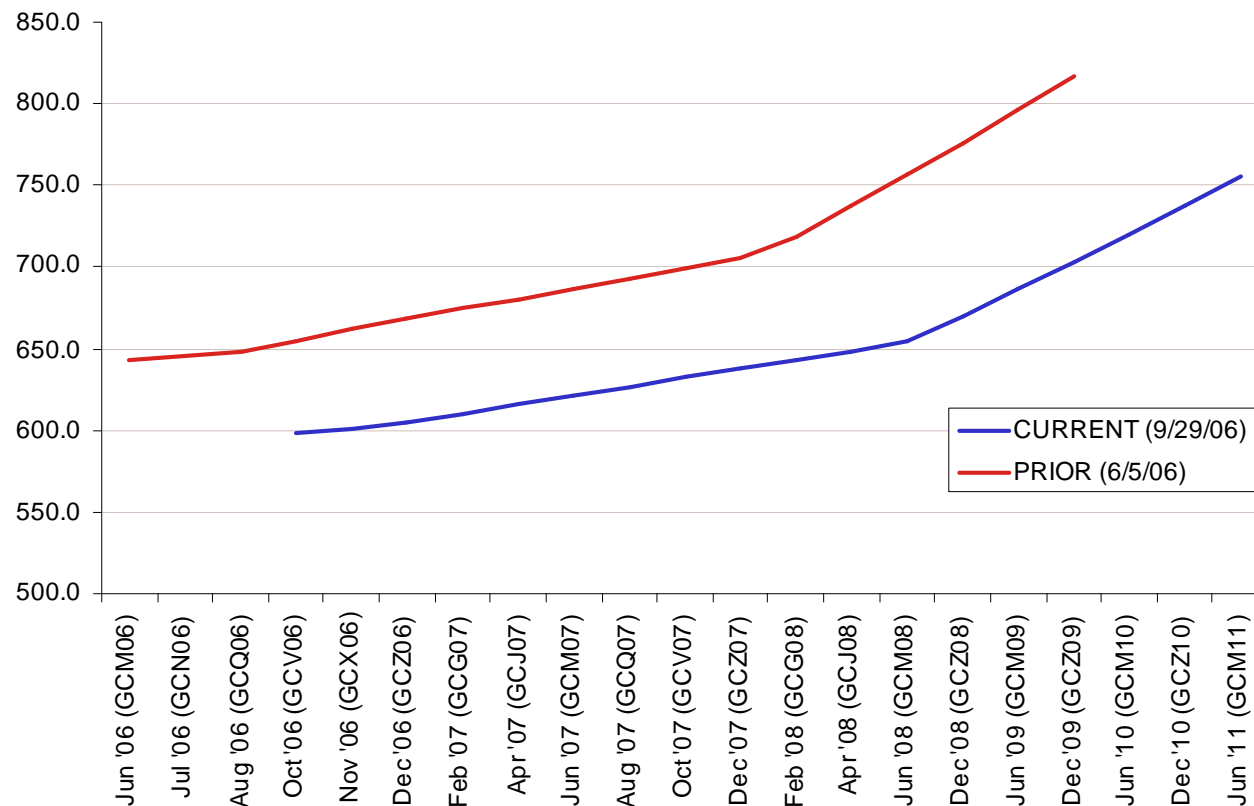
Contract Specifications

Exchange: COMEX

Trading Unit: 100 troy ounces

Trading Hours:

- 8:20a.m. to 1:30p.m.
(ACCESS 2:00p.m. - 8:00a.m.
Mon-Thurs, 2:00p.m. -
4:30p.m. Fri, 7:00p.m. -
8:00a.m. Sun) EST



Source: Man Financial

Silver (SI)

Contract Specifications

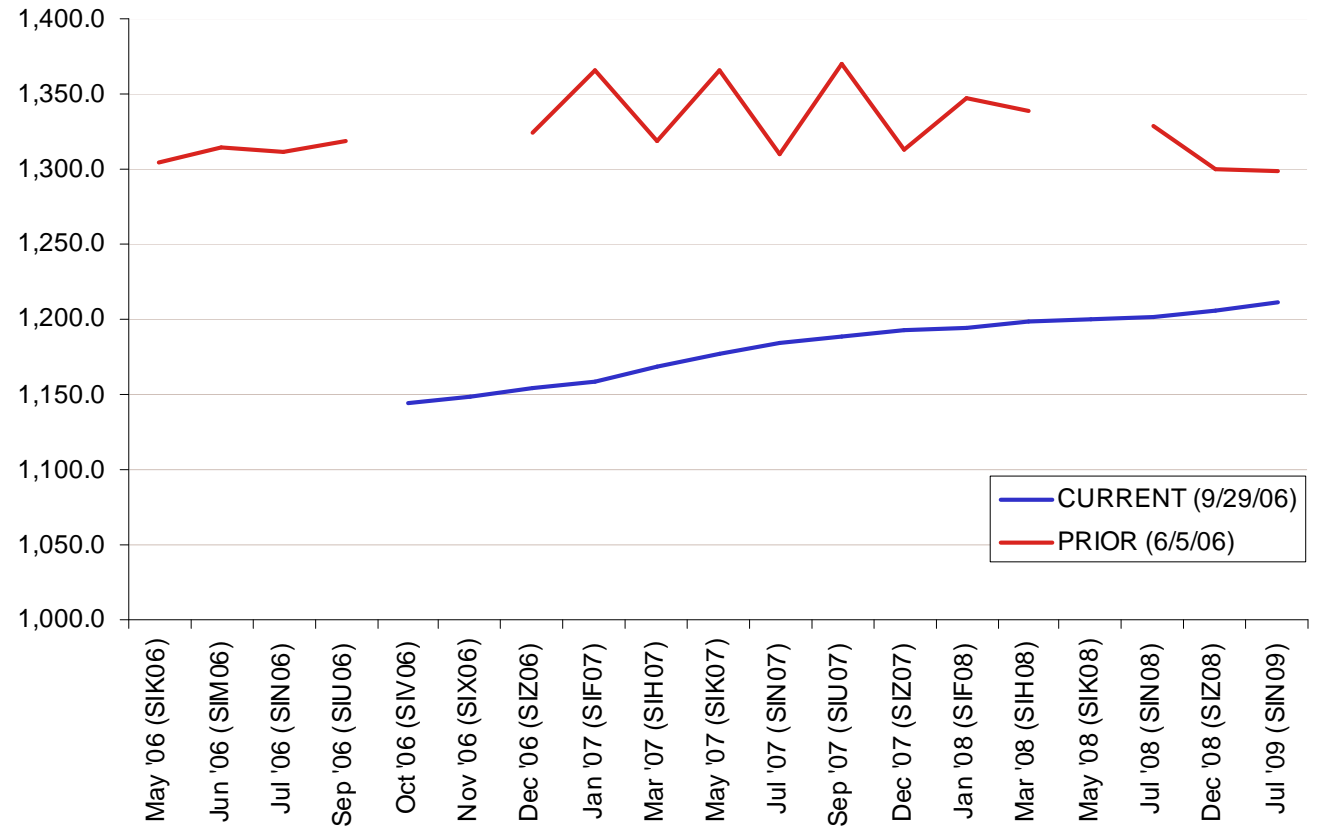
Exchange: COMEX

Trading Unit: 5,000 troy ounces

Trading Hours:

- 8:25a.m. to 1:25p.m.
(ACCESS 2:00p.m. -
8:00a.m. Mon-Thurs,
2:00p.m. - 4:30p.m. Fri,
7:00p.m. - 8:00a.m. Sun)
EST

Cents per Troy Oz (1.097oz)



Source: Man Financial

Copper – High-Grade (HG)

Contract Specifications

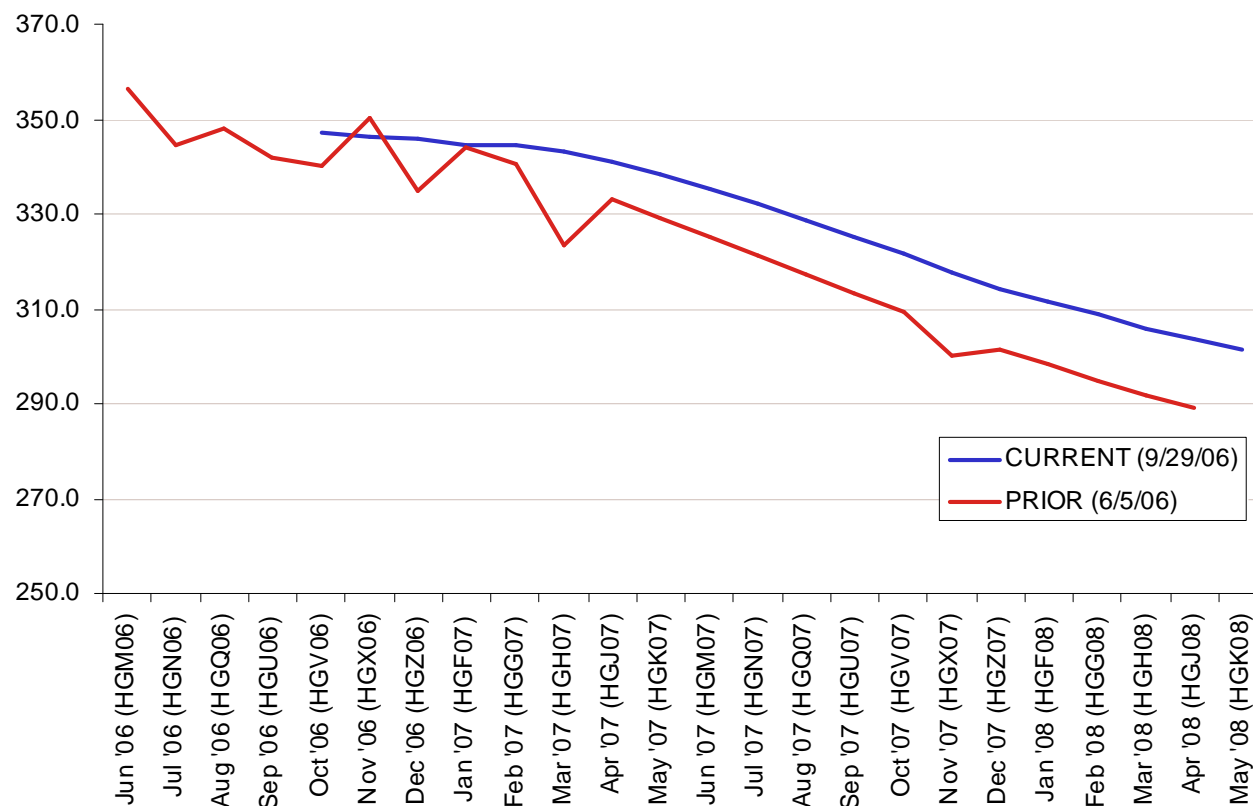
Exchange: COMEX

Trading Unit: 25,000 lbs

Trading Hours:

- 8:10a.m. to 1:00p.m.
(ACCESS 2:00p.m. - 8:00a.m.
Mon-Thurs, 2:00p.m. -
4:30p.m. Fri, 7:00p.m. -
8:00a.m. Sun) EST

Cents per Pound



Source: Man Financial